

INSPIRAL



OPERATING LIGHTS &
OPERATING TABLES
2019

INSPI TAL

www.inspital.com

CONTENT

03	OPERATING LIGHTS
08	OPERATING TABLES
14	C-ARM IMAGING TABLE
16	SURGICAL POSITIONS
18	OPERATING TABLE ACCESSORIES



New generation, LED Technology



Model: LD20.53

Arm Mounted Monitor(Camera With)



Inspital LED operating lights are designed to meet all surgical illumination requirements of operating theatres. New generation LED technology helps the surgeons to operate and view the surgery area clearly. Inspital LED lights can be adapted in any size of operating theatres including large hybrid types with variety of models & combinations.

TECHNICAL SPECIFICATIONS

• Diameter of lighthead	: Ø600 mm
• Illumination power, in 1 m	: 160.000 Lux max
• Color temperature	: 3000 K - 5000 K
• Color rendering index, Ra CRI	: 96%
• Dimming Range	: % 1 – 100
• Adjustable focus diameter	: 130 – 300 mm
• Temperature increase in surgical area	: < 0,5°C
• Number of LED modules	: 60
• Lifetime of LED	: Min. 50.000 hour
• IP Class	: IP 54
• Degree of turbulence (standard value 37.5% max.)	: %30



Model: LD20.19
Model: LD20.24
Model: LD20.52

Double Arm with 19" Monitor (Camera With)
Double Arm with 24" Monitor (Camera With)
Without Monitor (Camera With)



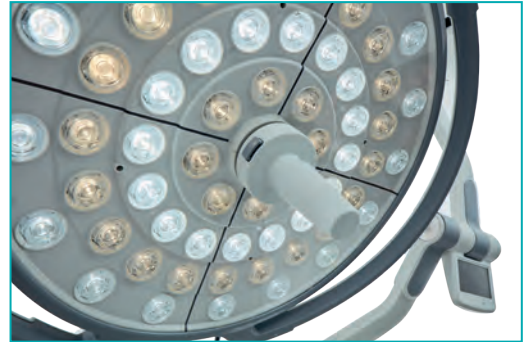
Model: LD10.03
Model: LD15.33

Digital
Analog

OPERATING LIGHTS

New Generation LED Technology

- ◆ High end LED modules fulfill all surgery requirements
- ◆ Each LED module can be changed individually in case of any failure
- ◆ 50.000 hours of long life time
- ◆ Adjustable color temperature between 3500-5000 °K



Special Lamp Head Design

- ◆ Head design with low aerodynamic resistance protects the surgical room's laminar air flow during the operation
- ◆ Manual focus function can be adjusted both by the handle and by the control panel



Endoscopy Mode

- ◆ Lamp can be switched to the endolight mode by a single button

Control Panel

- ◆ 4.3" LCD touchscreen and membrane control panel with LED indicator alternatives for all models



Camera

- ◆ HD camera system with auto focus and optical zoom functions, can be integrated and system can be controlled via touch panel



Battery

- ◆ External battery can be added for ceiling type operating lights
A.C. : LD05.05





Model: LD10.02
Model: LD15.22

Digital
Analog



Model: LD10.01
Model: LD15.11

Digital
Analog



Model: LD05.06

Mobile with Battery

Battery back up system provides 2,5 hours of energy

A photograph of an operating room. In the foreground, a white mobile medical unit with two large clear reservoirs and tubing is on wheels. To its right is a black and silver medical cart. In the background, a surgical table is tilted upwards, and a large circular surgical light with many small lights is illuminated. An orange semi-transparent banner is overlaid across the middle of the image.

Operating Together for Life

INSPIRAL



OPERATING TABLES

ELECTRO-HYDRAULIC OPERATING TABLE, VISCO / OT80.20

ELECTRO-HYDRAULIC OPERATING TABLE, BARIATRIC / OT80.15

Inspital operating tables are designed to meet all special requirements of operating theaters with its powerful and stable electro-hydraulic systems. Wide range of accessories makes them very flexible for different surgical disciplines.

Bariatric version of Inspital tables with wider table top and higher lifting capacity (360 kgs) can meet specific requirements of this kind of operations.

Three layers visco mattress for ensuring patients comfort

Hand and column control units

Durable and hygienic stainless steel body

Optimum x-ray image quality

Telescopic height adjustment

ELECTRICAL MOVEMENTS

- Height
- Back Rest
- Trendelenburg
- Reverse Trendelenburg
- Lateral Tilt
- Sliding
- Central Locking

MECHANICAL MOVEMENTS

- Head Rest
- Leg Rests, Up / Down
- Kidney Elevator(optional)

SIZES

- Width x Length : 550x2200 mm (OT80.20)
- Width x Length : 720x2200 mm (OT80.15)
- Height (max) : 980 mm
- Height (min) : 580 mm
- Mattress thickness : 70 mm

*Max. & min. dimensions are measured without mattress.

ANGLES

• Sliding Movement	: 300 mm	• Reverse Trendelenburg	: -30°
• Lateral Tilt Movement	: +20°/- 20°	• Leg Rest Up / Down	: +60°/-90°
• Back Rest Movement	: +80°/- 45°	• Head Rest Movement	: +45° / - 90°
• Trendelenburg	: +30°	• Flex / Reflex Position	: +225° / -70°
• Kidney Surgery Position	: 150° (optional)		



OPERATING TABLES

ELECTRO-HYDRAULIC OPERATING TABLE, PU / OT80.25



ELECTRICAL MOVEMENTS

- Height
- Back Rest
- Trendelenburg
- Reverse Trendelenburg
- Lateral Tilt
- Sliding
- Central Locking

MECHANICAL MOVEMENTS

- Head Rest
- Leg Rests, Up / Down
- Kidney Elevator (optional)

SIZES

- Width x Length : 550x220 mm
 - Height (max) : 980 mm
 - Height (min) : 580 mm
 - Mattress thickness : 70 mm
- *Max. & min. dimensions are measured without mattress.

ANGLES

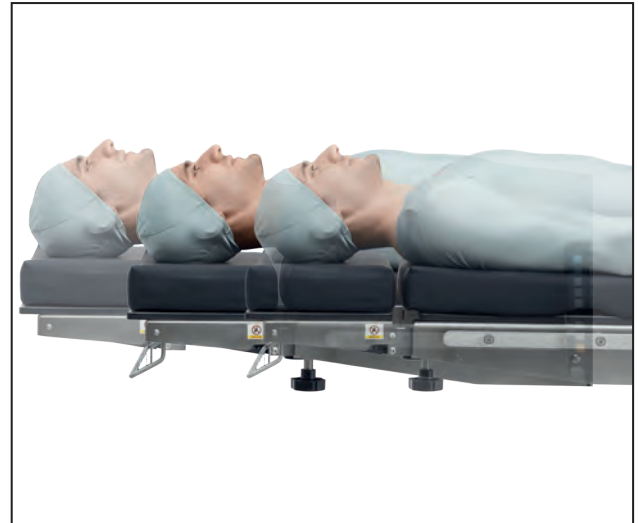
• Sliding Movement	: 300 mm	• Reverse Trendelenburg	: -30°
• Lateral Tilt Movement	: +20°/- 20°	• Leg Rest Up / Down	: +60°/-90°
• Back Rest Movement	: +80°/- 45°	• Head Rest Movement	: +45° / - 90°
• Trendelenburg	: +30°	• Flex / Reflex Position	: +225° / -70°
• Kidney Surgery Position	: 150°(optional)		





Functional Design & Wide Range of Accessory Options

- ◆ Modular design taking shape by different surgical operations with high stability
- ◆ Solutions ensuring to reach the position required by any kind of surgical operations with its wide range of accessory options



Sliding

- ◆ Image reception ability in a wide area without disturbing the sterile environment by its sliding feature within 300 mm on horizontal plane



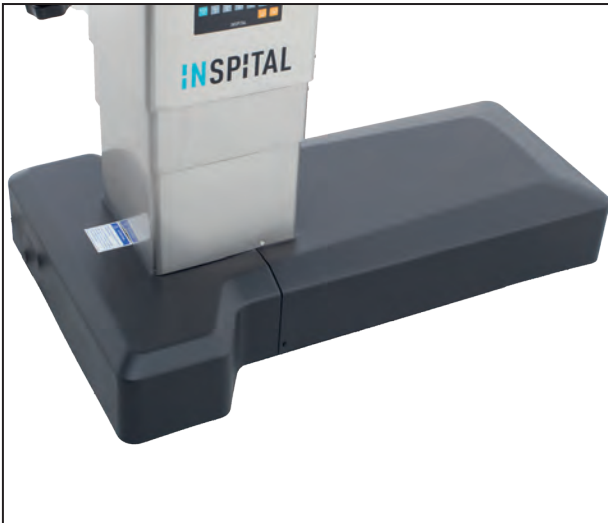
Optimal Clearance In Surgical Area

- ◆ Maximum surgical area visibility with its kidney elevator, integrated on the table and adjustable up to 150° (70 mm)
A.C. : OT80.10



Accessory Positioning

- ◆ Stainless steel rail attachment system integrated on both sides of the table, enabling accessory mounting without removing existing accessories



T-Base Specifications

- ◆ T-Base enables table optimal approach for the surgical team and equipment
- ◆ ABS Material with break and corrosion resistance



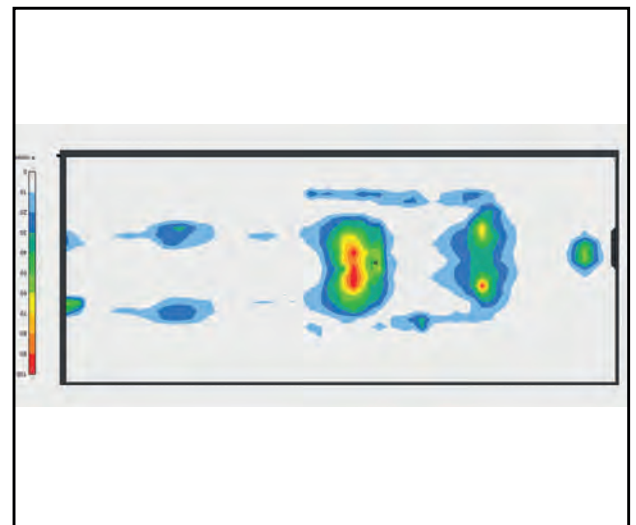
Different Mattress Options

- ◆ Compact material table top with high X-ray permeability that allows high-quality image reception
- ◆ Visco or polyurethane mattress options that ensure the patient's comfort by taking its body shape, thus preventing decubitus prophylaxis



Easy Approach for C-Arm

- ◆ Complete access to all table areas and its X-ray permeable table top allow high image quality
- ◆ Suitable base structure for easy access and approach of the C-arm scopy and surgical microscopes

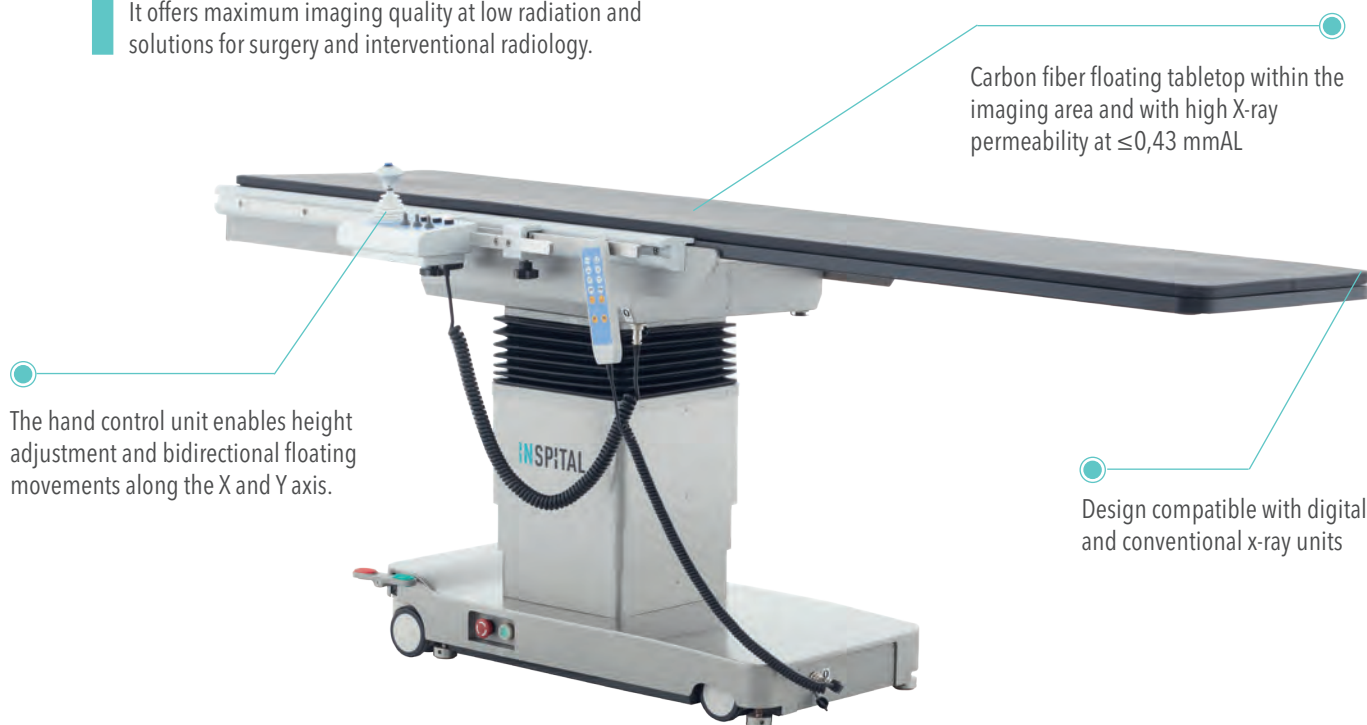


Optimum Mattress Performance

- ◆ Inspital operating table mattresses are designed and manufactured according to the Pressure Mapping test results.

C-ARM IMAGING TABLE / OT80.30

INSPIRAL OT80.30 imaging tables are designed to enable excellent X-ray accessibility with its carbon fiber top tray. It offers maximum imaging quality at low radiation and solutions for surgery and interventional radiology.



SPECIFICATIONS

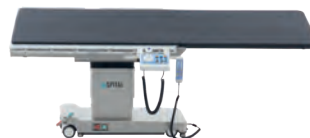
• Table top:	:2450*600 mm
• Length of imaging:	: +20°/- 20°
• Longitudinal travel:	: +80°/- 45°
• Lateral travel:	: +30°
• Vertical travel	: 360mm (700-1060)
• Trendelenburg& Reverse-	: 18°
• Lateral tilt	: 15°
• Load capacity	: 200 kg
• Power	: 220V & 11 OV 50Hz, 350VA



Its 1100 mm carbon fiber tabletop enables various patient positions and low X-Ray absorption for clear imaging. This helps to extend the lifetime of the X-Ray machine Spheroid's tube.



The hand control unit enables height adjustment and bidirectional floating movements along the X and Y axis.





Left Lateral Tilt Position



Struma Surgery Position



Reflex Position



Flex Position



Chest (Breast) Surgery Position



Chest Surgery Position



Gynecologic and Urologic Surgery Position



Spinal, Proctologic Surgery Position



Meniscus Surgery Position



Ophthalmology Position



Arthroscopic Position



Orthopedic Fracture Surgery Position



Orthopedic Traction Set

Orthopedic traction set is suitable for use with all INSPITAL operating tables in orthopedic surgeries.

- ◆ Made of 304 quality stainless steel
- ◆ Leg strainer function by mechanical lever
- ◆ Traction boots with up & down movement and rotation capability around its own axis

A.C:OT60.90



Neurosurgery Head Rest with Pin & Horseshoe Head Rest

Neurosurgery head rest especially designed for use in neurosurgery operations.

- ◆ Extremely durable and rigid construction from aluminum alloy
- ◆ 3 pcs fixing system with pins and completely adjustable skull clamps
- ◆ Adjustment mechanism from 4 different points
- ◆ Easily mountable horse shoe head rest accessory

A.C: OT60.80 SET

- ◆ Can be used with skull fixing pins or horseshoe head rest accessories



Cross Bar Adapter

A.C:OT60.82



Arthroscopy Shoulder Support

Designed for use in arthroscopy operations and suitable for use with all Opera tables

- ◆ 7 stage back rest adjustment
- ◆ Head fixing section with up & down movement
- ◆ Special design offering easy reach to shoulder area
- ◆ Body fixing strap

A.C:OT60.76



Leg Positioning Boot

An accessory designed for use in branches that require leg positioning

- ◆ Positioning system with one hand control and self-brakes
- ◆ Special booths for foot comfort

A.C:OT60.77





Arm Support

A.C.:OT60.01

- ◆ Including fixing clamp and strap
- ◆ Rotatable and tiltable armboard
- ◆ Adjustable height
- ◆ Made of stainless steel

Strap:

A.C.:OT60.02

- ◆ Adjustable length, easy to fix

Arm Adaptor

A.C.:OT60.34

- ◆ Arm extension apparatus



Anaesthesia Screen, Fixed Size

A.C.:OT60.03

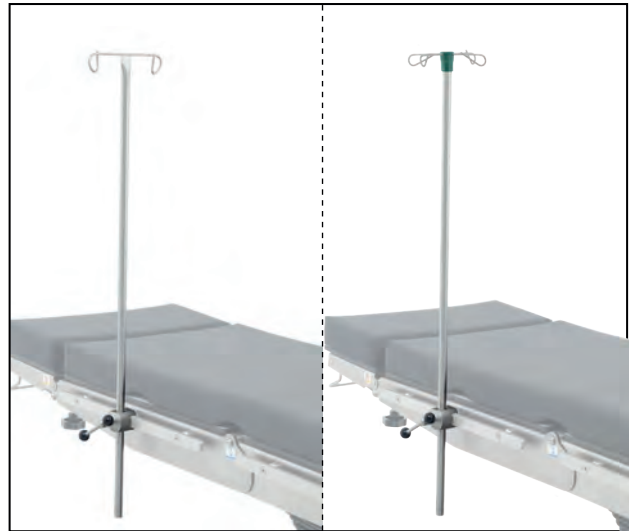
- ◆ Including fixing clamp
- ◆ Fixed width: Ø12x820x640 mm
- ◆ Made of stainless steel



Anaesthesia Screen, Adjustable

A.C.: OT60.04

- ◆ Including fixing clamp
- ◆ Extendible to both sides
- ◆ Adjustable height
- ◆ Made of stainless steel



IV Stand, 2 hooks

A.C.: OT60.05

- ◆ Including fixing clamp
- ◆ 2 hooks
- ◆ Adjustable height
- ◆ Made of stainless steel

IV Stand, 4 hooks

A.C.: OT60.06

- ◆ Including fixing clamp
- ◆ 4 hooks
- ◆ Adjustable height
- ◆ Made of stainless steel



Body Fixing Strap

A.C.: OT60.07

- ◆ Total length: 2300 mm
- ◆ Large cushion for body
- ◆ Easily adjustable length



Geopel Leg Rest

A.C.: OT60.08

- ◆ Pair
- ◆ Including fixing clamps
- ◆ Rotatable and tiltable
- ◆ Adjustable height
- ◆ Made of stainless steel



Shoulder Support

A.C.: OT60.09

- ◆ Pair
- ◆ Including fixing clamps
- ◆ Extendible
- ◆ Adjustable height
- ◆ Made of stainless steel



Lateral Support

A.C.: OT60.10

- ◆ Pair
- ◆ Including fixing clamps
- ◆ Extendible
- ◆ Rotatable and tiltable
- ◆ Adjustable height
- ◆ Made of stainless steel



Irrigation Bowl, Rectangle Form A.C.: OT60.11

- ◆ Including fixing clamp
- ◆ 2 joints rotatable arms
- ◆ Adjustable height
- ◆ Sizes: 325x265x95 mm
- ◆ Made of stainless steel



Irrigation Bowl With Drainage, Rectangle Form
A.C.: OT60.12

- ◆ Including fixing clamp
- ◆ Including drainage tube
- ◆ 2 joints rotatable arms
- ◆ Adjustable height
- ◆ Sizes: 325x265x95 mm
- ◆ Made of stainless steel



Irrigation Bowl With Drainage, Round Form

A.C.: OT60.13

- ◆ Including fixing clamp
- ◆ Including drainage tube
- ◆ 2 joints rotatable arms
- ◆ Adjustable height
- ◆ Ø260x80 mm
- ◆ Made of stainless steel



Waste Bin

A.C.: OT60.14

- ◆ 20 L capacity
- ◆ Compatible with irrigation bowls with drainage
- ◆ Tube hole on the cover
- ◆ 5 castors and rubber bumper
- ◆ Including carriage handle and cover
- ◆ Made of stainless steel



Clamp, Easy Fix

A.C.: OT60.15

- ◆ Easy to fix type. No need to slide from one side of the rail
- ◆ Suitable for 25x10 mm rails
- ◆ Made of aluminium



Clamp

A.C.: OT60.16

- ◆ For round rod type accessories
- ◆ Suitable for 25x10 mm rails
- ◆ Made of stainless steel



Clamp, Rotatable

A.C.: OT60.17

- ◆ For rod type accessories
- ◆ 360° rotatable
- ◆ Single lever for total lock
- ◆ Suitable for 25x10 mm rails
- ◆ Made of stainless steel



Clamp, Rotatable

A.C.: OT60.18

- ◆ For rod type accessories
- ◆ 360° rotatable
- ◆ Double locking lever
- ◆ Suitable for 25x10 mm rails
- ◆ Made of stainless steel



Foot Support Plate

A.C.: OT60.19

- ◆ Pair
- ◆ Including fixing clamps
- ◆ Made of stainless steel



Proctology Set

A.C.: OT60.20

- ◆ Set of rectoscopy roll and knee supports
- ◆ Including fixing clamps
- ◆ Rotatable and tiltable knee support
- ◆ Height and angle adjustable rectoscopy roll
- ◆ Made of stainless steel



Ophthalmologic Head and Wrist Support

A.C.: OT60.21

- ◆ Rotatable and tiltable head support and wrist support
- ◆ Height and angle adjustable
- ◆ Made of stainless steel



Weinberger Hand Traction Set

A.C.: OT60.22

- ◆ For the secure fixation of hand and upper arm
- ◆ Height and distance adjustable hand cuff
- ◆ Height adjustable arm extension roll
- ◆ Including fixing clamps
- ◆ Made of stainless steel



Leg Strap

- ◆ Pair
- ◆ Adjustable

A.C.: OT60.23



Meniscus Positioning Roll

- ◆ Including fixing clamp
- ◆ Adjustable height
- ◆ Made of stainless steel

A.C.: OT60.24



Sliding Handles

- ◆ Designed for easy movement
- ◆ Pair
- ◆ Including fixing clamps
- ◆ Made of stainless steel

A.C.:OT60.25



Arm Surgery Extension

- ◆ Including fixing clamps
- ◆ Height adjustable
- ◆ 2 support leg with brake castors
- ◆ Made of stainless steel

A.C.: OT60.26

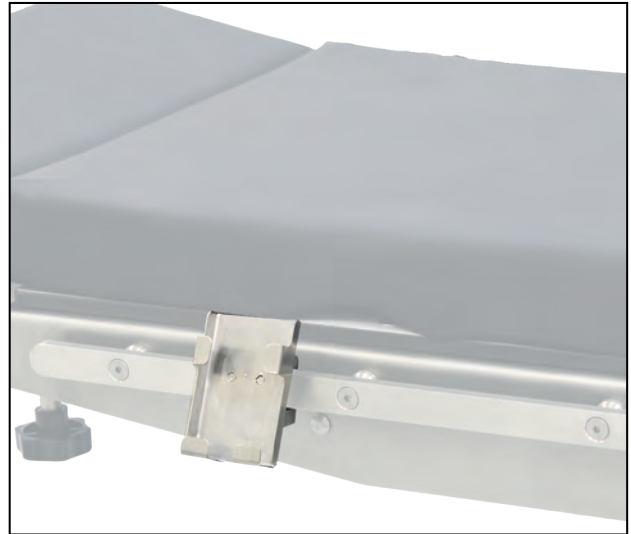


Hand Control Unit A.C.: OT60.27

- ◆ Full function hand control unit

Foot Switch A.C.: OT60.28

- ◆ Additional control unit
- ◆ For main functions: height, trendelenburg and lateral tilt



Support for Hand Control Unit A.C.: OT60.29

- ◆ Easy to fix to accessory rail
- ◆ Made of stainless steel



X-Ray Cassette Support A.C.: OT60.30

- ◆ Used to fix and support X-Ray cassettes
- ◆ Including fixing clamp
- ◆ Made of stainless steel



X-Ray Cassette Tray A.C.: OT60.31

- ◆ Used to carry and position the X-Ray cassettes
- ◆ Including fixing clamp
- ◆ Made of stainless steel



Step, Double

A.C.: BS10.20

- ◆ Sizes: 640x600x400 mm
- ◆ Made of stainless steel



Step, Single

A.C.: BS10.10

- ◆ Sizes: 600x350x180 mm
- ◆ Made of stainless steel



Accessory Trolley

A.C.: OT60.32

- ◆ For the storage of table accessories
- ◆ Four rails to hang all accessories
- ◆ Four castors, two with brake
- ◆ Made of stainless steel



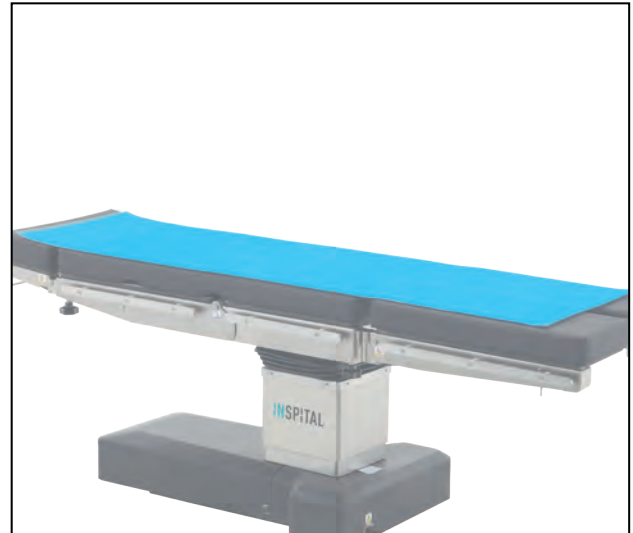
Orthopedic Traction Set Trolley A.C.: OT60.33

- ◆ For the storage and easy installation of orthopedic traction set
- ◆ Large basket for smaller accessories
- ◆ Four castors, two with brake
- ◆ Made of stainless steel



Wilson Frame Set A.C.: OT60.61

- ◆ Consist of 1 piece of large cushion and 4 pieces of gel pads

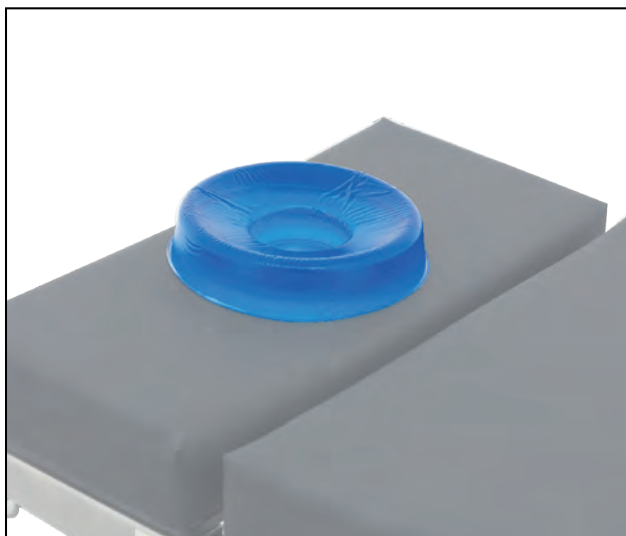


Gel Mattress, Adult A.C.: OT60.62

- ◆ Sizes: 1830x500x100 mm
- ◆ Made of gel

Gel Mattress, Pediatric A.C.: OT60.63

- ◆ Sizes: 660x310x130 mm
- ◆ Made of gel



Head Rest, Gel, Adult

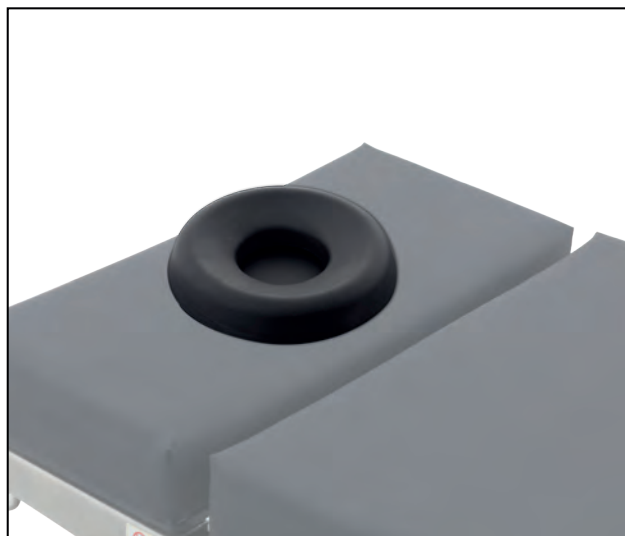
A.C.: OT60.50

- ◆ Sizes: 200x75x45 mm
- ◆ Made of gel

Head Rest, Gel, Pediatric

A.C.: OT60.51

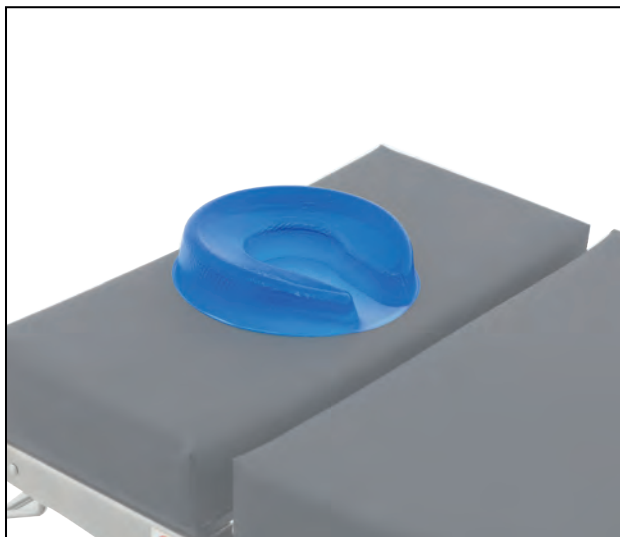
- ◆ Sizes: 140x60x35 mm
- ◆ Made of gel



Head Rest, PU, Adult

A.C.: OT60.40

- ◆ Sizes: 195x85x40 mm
- ◆ Made of PU



Horseshoe Head Rest, Gel, Adult

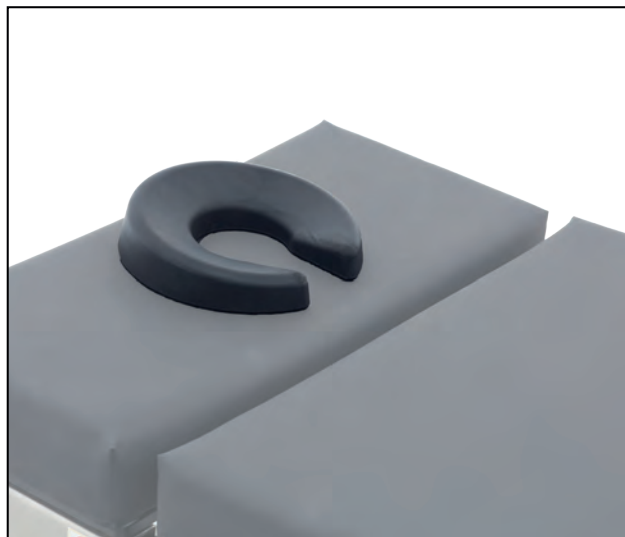
A.C.: OT60.52

- ◆ Sizes: 200x75x45 mm
- ◆ Made of gel

Horseshoe Head Rest, Gel, Pediatric

A.C.: OT60.53

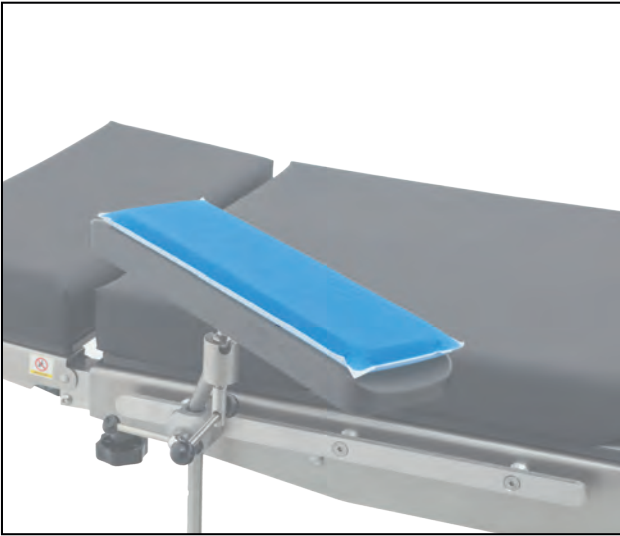
- ◆ Sizes: 140x60x35 mm
- ◆ Made of gel



Horseshoe Head Rest, PU, Adult

A.C.: OT60.41

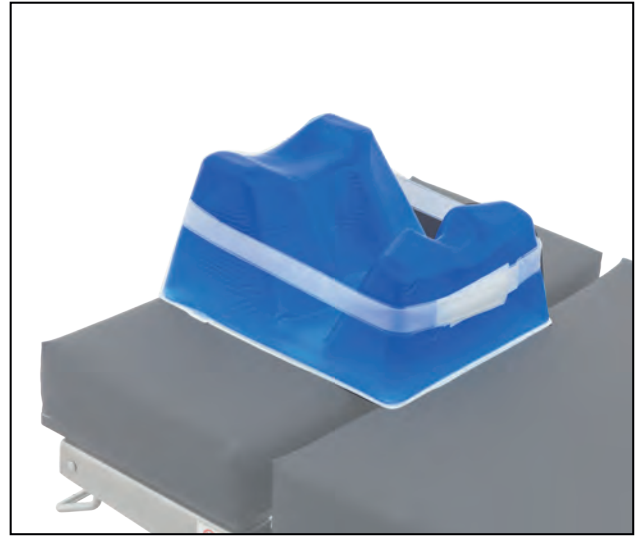
- ◆ Sizes: 195x80x45 mm
- ◆ Made of PU



Arm Rest, Gel

A.C.: OT60.54

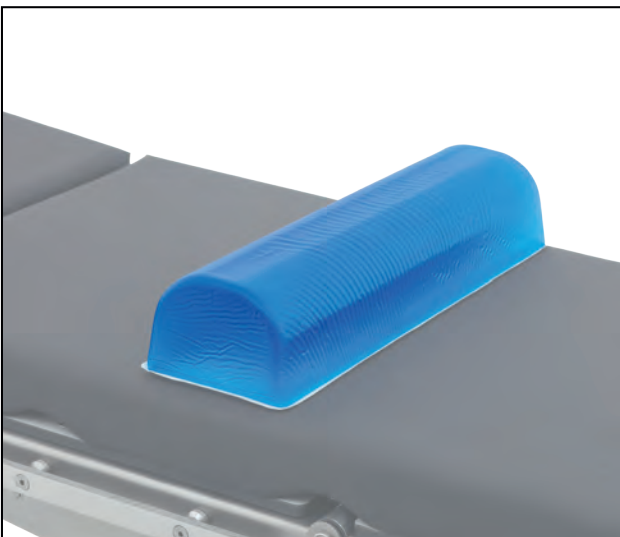
- ◆ Sizes: 400x130x20 mm
- ◆ Made of gel



Prone Head Support, Gel

A.C.: OT60.57

- ◆ Sizes: 280x230x145 mm
- ◆ Made of gel



Chest Roll, Gel, Adult

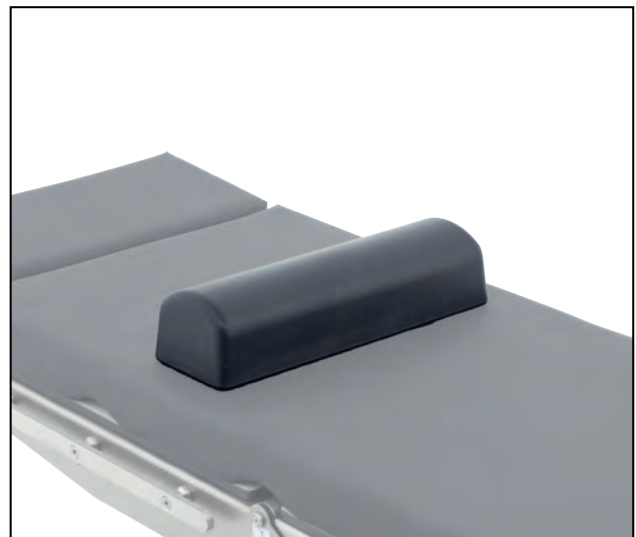
A.C.: OT60.55

- ◆ Used to fix and support X-Ray cassettes
- ◆ Including fixing clamp

Chest Roll, Gel, Pediatric

A.C.: OT60.56

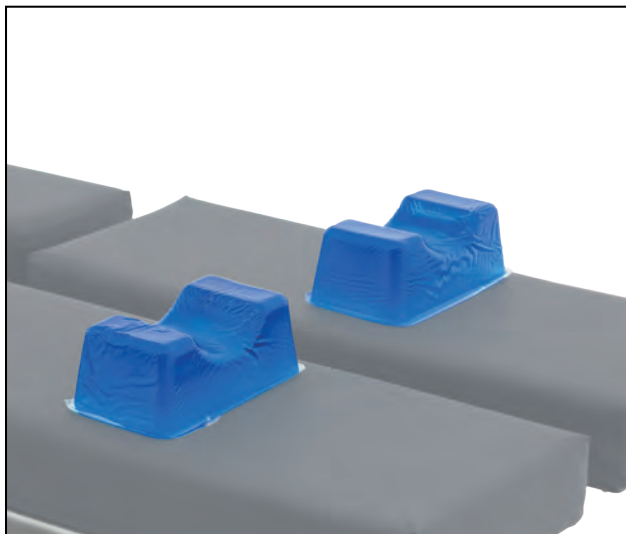
- ◆ Used to fix and support X-Ray cassettes
- ◆ Including fixing clamp



Chest Roll, PU

A.C.: OT60.42

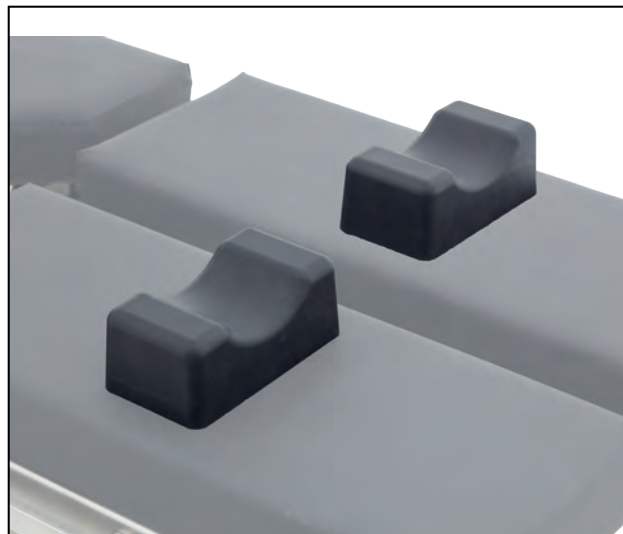
- ◆ Sizes: 440x135x100 mm
- ◆ Made of PU



Foot Wrist Support, Gel

A.C.: OT60.58

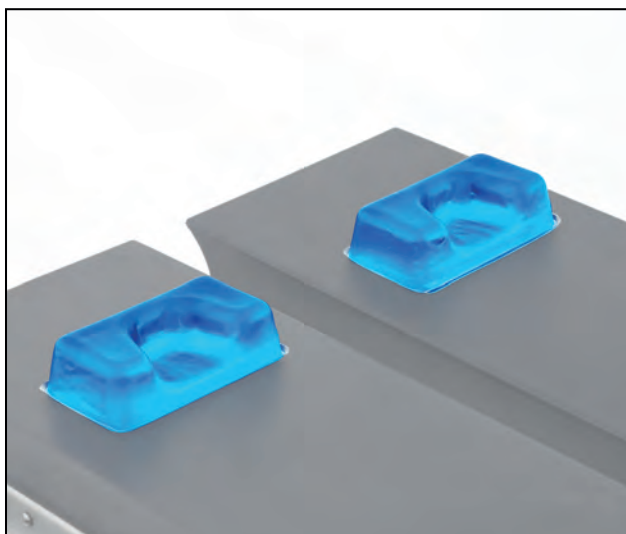
- ◆ Sizes: 100x110x70 mm
- ◆ Pair
- ◆ Made of gel



Foot Wrist Support, PU

A.C.: OT60.43

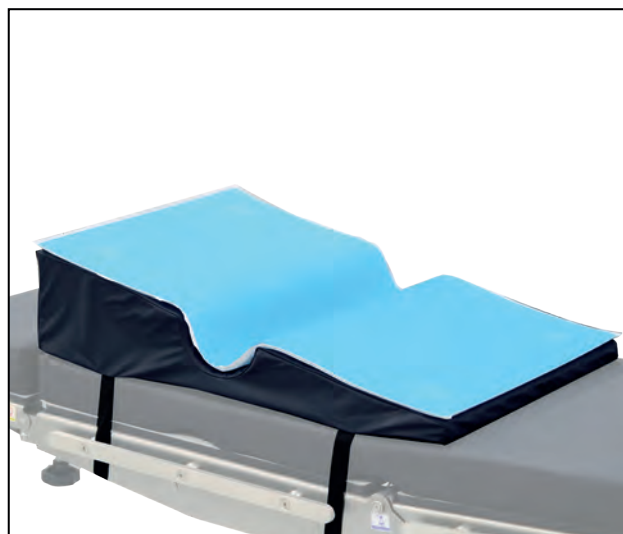
- ◆ Sizes: 175x95x70 mm
- ◆ Pair
- ◆ Made of PU



Heel Support, Gel

A.C.: OT60.59

- ◆ Sizes: 170x110x50 mm
- ◆ Pair
- ◆ Made of gel



Lateral Positioner, Gel

A.C.: OT60.60

- ◆ Consist of 1 piece of large cushion and 1 piece of gel pad
- ◆ Sizes: 720x500x100 mm

Laparoscopic Surgery

- Anesthesia Screen, Fixed Size OT60.03
- Arm Support OT60.01
- Leg Positioning Boot OT60.77
- Head Rest, Gel, Adult OT60.50
- Gel Mattres, Adult OT60.35
- Shoulder Support OT60.09

Robotic Surgery

- Anesthesia Screen, Fixed Size OT60.03
- Arm Support OT60.01
- Leg Positioning Boot OT60.77
- Shoulder Support OT60.09
- Body Fixing Strap OT60.07

Urology

- Anesthesia Screen, Fixed Size OT60.03
- Arm Support OT60.01
- Irrigation Bowl with Drainage Rectangle F. OT60.12
- Leg Positioning Boot OT60.77

OB-GYN

- Anesthesia Screen, Fixed Size OT60.03
- Arm Support OT60.01
- Leg Positioning Boot OT60.77

Bariatric Surgery/Gastric Position

- Anesthesia Screen, Fixed Size OT60.03
- Arm Support OT60.01
- Foot Wrist Support Gel OT60.58
- Arm Surgery Extension OT60.26
- Arm Rest, Gel OT60.54
- Body Fixing Strap OT60.07

Traumatology/Shoulder Surgery

- Arm Support OT60.01
- Arthroscopy Shoulder Support OT60.76
- Lateral Support OT60.10

Traumatology/Hand Surgery

- Anesthesia Screen, Fixed Size OT60.03
- Arm Support OT60.01
- Arm Rest, Gel OT60.54

Orthopedic Surgery/Femur Fracture/Supine

- Anesthesia Screen, Fixed Size OT60.03
- Arm Support OT60.01
- Orthopedic Traction Set OT60.90
- Arm Surgery Extension OT60.26
- Gel Matress, Pediatric OT60.36

Supine /Kidney Bridge

- Anesthesia Screen, Fixed Size OT60.03
- Arm Support OT60.01
- Body Fixing Strap OT60.07

Orthopedic Surgery/Femur Fracture/Lateral

- Anesthesia Screen, Fixed Size OT60.03
- Arm Support OT60.01
- Orthopedic Traction Set OT60.90
- Arm Surgery Extension OT60.26

Orthopedic Surgery/Tibia Fracture

- Anesthesia Screen, Fixed Size OT60.03
- Arm Support OT60.01
- Orthopedic Traction Set OT60.90
- Arm Surgery Extension OT60.26

Spine Surgery in Prone Position

- Anesthesia Screen, Fixed Size OT60.03
- Wilson Frame Set OT60.34
- Prone Head Support, Gel OT60.57
- Arm Support OT60.01

Pediatric Set Ups

- Anesthesia Screen, Fixed Size OT60.03
- Gel Matress, Pediatric

Cardiovascular Surgery

- Anesthesia Screen, Fixed Size OT60.03
- Arm Support OT60.01
- Arm Rest Gel OT60.54
- Clamp OT60.16

Lateral/Kidney Surgery

- Anesthesia Screen, Fixed Size OT60.03
- Arm Support OT60.01
- Lateral Support OT60.10

Neurosurgery/Half Sitting Position

- Anesthesia Screen, Fixed Size OT60.03
- Arm Support OT60.01
- Lateral Support OT60.10
- Neurosurgery Head Rest with Pin& Hor. OT60.80
- Head Rest
- Body Fixing Strap OT60.07

Neurosurgery/Parkbench Position

- Anesthesia Screen, Fixed Size OT60.03
- Arm Support OT60.01
- Lateral Support OT60.10
- Neurosurgery Head Rest with Pin& Hor. OT60.80
- Head Rest

Neurosurgery/Prone

- Anesthesia Screen, Fixed Size OT60.03
- Arm Support OT60.01
- Lateral Support OT60.10
- Neurosurgery Head Rest with Pin& Hor. OT60.80
- Head Rest
- Body Fixing Strap OT60.07

INSPITAL

**INSPITAL MEDICAL
TECHNOLOGY GmbH**

Kalkumer Str.125
40468 Düsseldorf, GERMANY
Tel: +49 211 680 20 53-54
Fax: +49 211 680 20 55
www.inspital.de
info@inspital.de